

## Supporting families and child care providers within communities during COVID-19

Child Care Resource & Referral (CCR&R) nonprofit organizations work statewide to meet the needs of:

- families
- child care providers, and
- employers

CCR&Rs work within all 21 counties throughout New Jersey in coordination with a voluntary state network leadership agency – Child Care Aware of New Jersey



### Supporting Mercer County Families During COVID-19

- 16,617** 2020 # of child care referrals for NJ families
- 1,952** 2020 average monthly # of children who received a child care subsidy
- 727** 2020 children of essential personnel who received financial support for child care

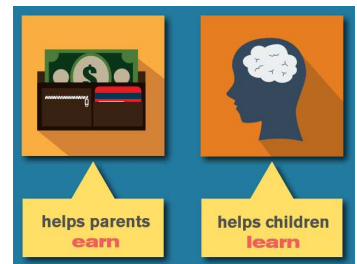
### Supporting Mercer Child Care Providers During COVID-19

- 191** 2020 child care provider contacts (questions answered, guidance & suggestions offered, & technical assistance)
- 26** 2020 zoom sessions (webinars, overviews, trainings)
- 285** 2020 zoom participants (webinars, overviews, trainings)
- 20** Spring 2020 family child care provider Care Kits (PPE, sanitizer, cleaning supplies)
- 39** 2020 family child care provider stabilization grants, health & safety grants, re-opening grants

### Child Care is the Pathway to Economic Recovery

Child care is also a two-generation strategy:

- Child care helps parents to work or return to the workforce
- Child care helps promote the healthy development of children



### Access to High Quality Child Care Matters.

- **For parents:** Employees with safe, reliable, quality child care are less likely to miss days of work and more likely to be focused on their work without the anxiety of worrying about their children.
- **For children:** Children who are in a quality child care setting are more likely to start school ready to succeed, more likely to graduate high school, and more likely to become part of a strong workforce in the future.
- **For employers:** Problems with child care leading to employee absences cost U.S. businesses \$3 billion annually. Employers benefit from employee reliability and building a future workforce of high school graduates who are college or career ready.

# Child Care is Essential to New Jersey's Economic Recovery

## COVID-19's Economic Impact on New Jersey Families

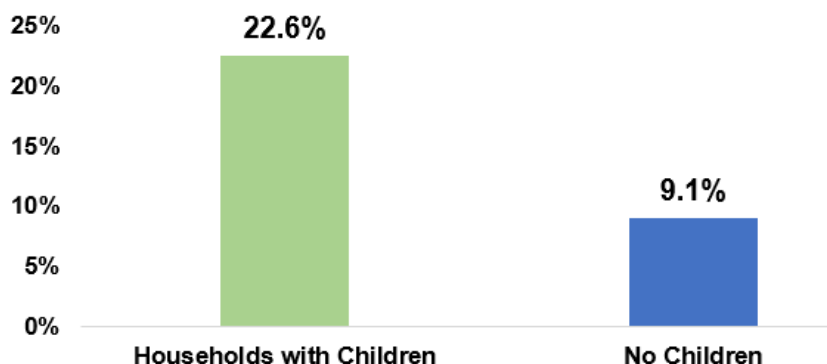
**Pre-COVID, New Jersey parents were working. The most recent data shows**

**171,611** New Jersey parents are home caring for children not in school or child care

**2.5 million** Fewer women are in the workforce throughout the U.S. compared to a year ago

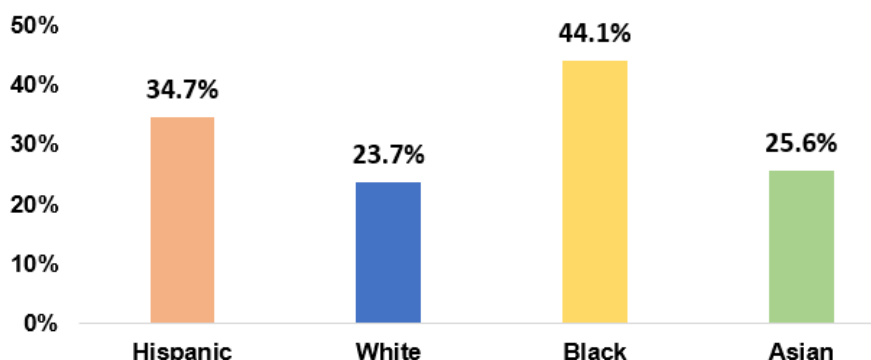
Source: U.S. Census Bureau, Weekly Household Pulse Survey, Week 27, March 17-29, 2021

**COVID-19: New Jersey Households Behind on Rent By Presense of Children March 17-March 29, 2021**



Source: U.S. Census Bureau, Weekly Household Pulse Survey, Week 27, March 17-29, 2021

**COVID-19: New Jersey Households with Difficulty Paying Bills in the last 7 Days March 17-29, 2021**



Source: U.S. Census Bureau, Weekly Household Pulse Survey, Week 27, March 17-29, 2021



**New Jersey working parents need child care in order to work or return to work.**

**COVID employment loss has led to:**

**50.7%** NJ families with children who have lost income since March 2020

**22.6%** NJ families with children who are behind on rent

**35.8%** NJ families with children who had difficulty paying household bills during the past 7 days

Source: U.S. Census Bureau, Household Pulse Survey, Week 27, March 17-29, 2021



**519,705** Individuals in New Jersey who are either unemployed or have dropped out of the workforce compared to one year ago

**Parents with children need child care to work or to return to the workforce!**

Source: U.S. Bureau of Labor Statistics, NJ Employment and Workforce Participation Trends, February 2021